

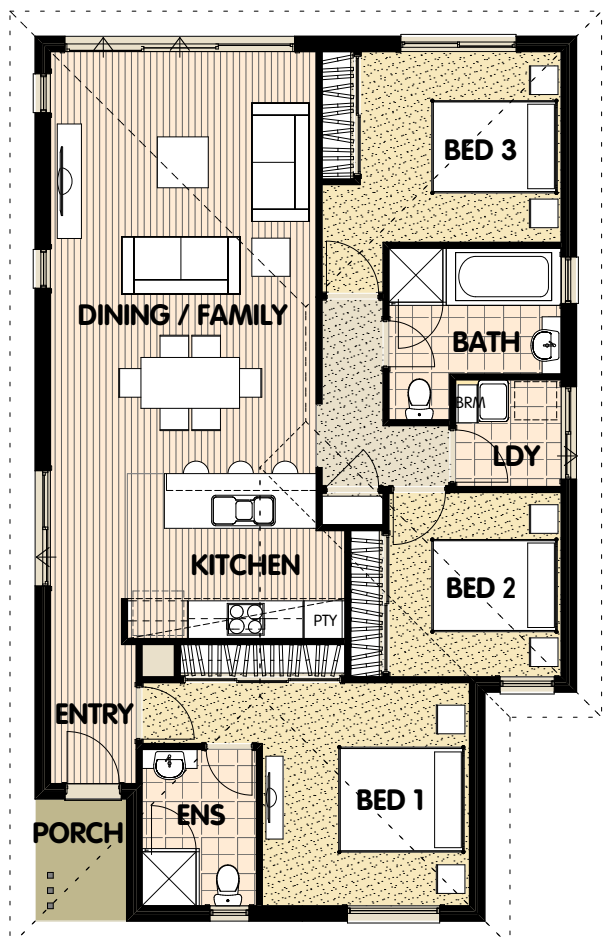
JOONDANA

3  2  2 



 **AUSTRALAND**

Lynton
CRANBOURNE



FEATURES & FITTINGS

- Master bedroom with private ensuite
- All bedrooms with built-in robes
- Open plan kitchen/family/dining area flows out onto the ample backyard
- Secure double lockup garage
- Gas boosted solar hot water unit
- Ducted heating
- Floor coverings, including ceramic tiles, floorboards and carpet where nominated
- Omega kitchen appliances – cook top, wall oven, rangehood
- Front landscaping

ROOM	DIMENSIONS
Bed 1	3510 x 3260
Bed 2	2900 x 2710
Bed 3	3000 x 3160
Dining / Family	6650 x 4180

TOTAL AREAS	M ²	Squares
Internal	110.43	11.88
Porch	2.76	0.29
Garage	38.76	4.17
Total Areas	151.95	16.35

Visit our Sales Office

Cnr Majestic Boulevard & Boronia Ave,
Cranbourne **Mel Ref.** 130 B11

Open Sat to Thurs 12pm - 5pm