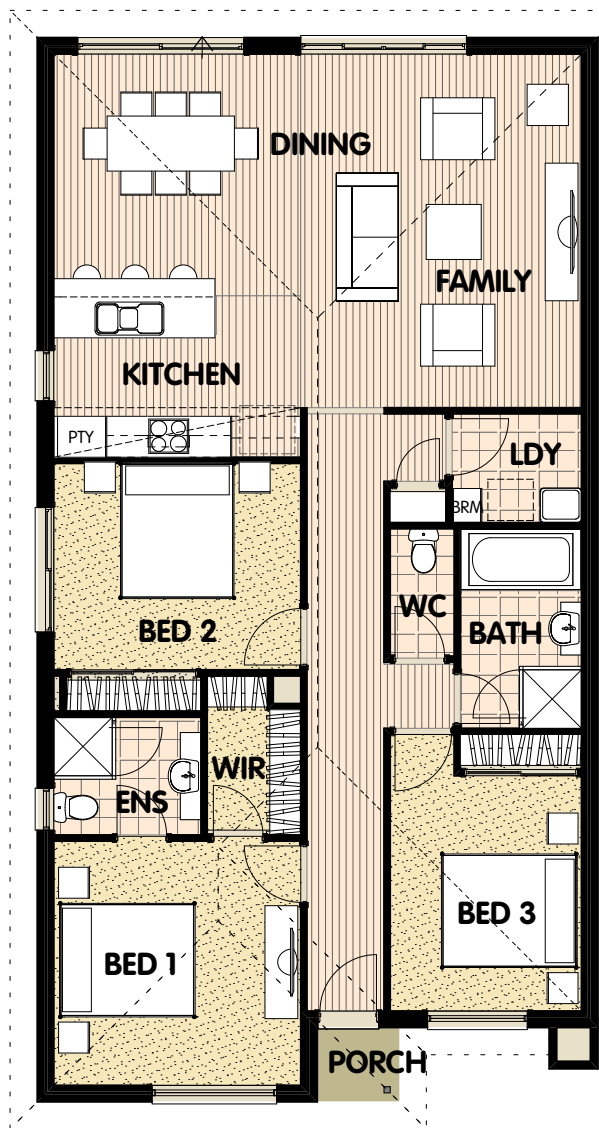


FORTESCUE

3  2  2 



 **AUSTRALAND**
Lynton
CRANBOURNE



FEATURES & FITTINGS

- Master bedroom with walk-in robe and private ensuite
- Remaining bedrooms with built-in robes
- Open plan kitchen/family/dining area flows out onto the ample backyard
- Secure double lockup garage
- Gas boosted solar hot water unit
- Ducted heating
- Floor coverings, including ceramic tiles, floorboards and carpet where nominated
- Omega kitchen appliances – cook top, wall oven, rangehood
- Front landscaping

| ROOM | DIMENSIONS |
|--------|-------------|
| Bed 1 | 3550 x 3590 |
| Bed 2 | 3000 x 3590 |
| Bed 3 | 3420 x 2780 |
| Family | 5140 x 3500 |
| Dining | 3260 x 4170 |

| TOTAL AREAS | M ² | Squares |
|--------------------|----------------|--------------|
| Internal | 122.10 | 13.14 |
| Porch | 1.30 | 0.13 |
| Garage | 38.76 | 4.17 |
| Total Areas | 162.16 | 17.45 |

Visit our Sales Office

Cnr Majestic Boulevard & Boronia Ave,
Cranbourne **Mel Ref.** 130 B11

Open Sat to Thurs 12pm - 5pm